

Cole-Parmer Batch Control Drum Pump Systems

Save money by accurately dispensing expensive fluids—to ±0.5%

- Automatically dispense preset volumes of fluid from drums, tanks, and storage containers
- Control transfer of highly corrosive fluids
- Save up to seven preset volumes in the automatic batch memory

Batch control drum pumps are ideal for applications in chemical packaging, waste water treatment, chemical manufacturing, plating, semi-conductor, pharmaceutical and agricultural industries.

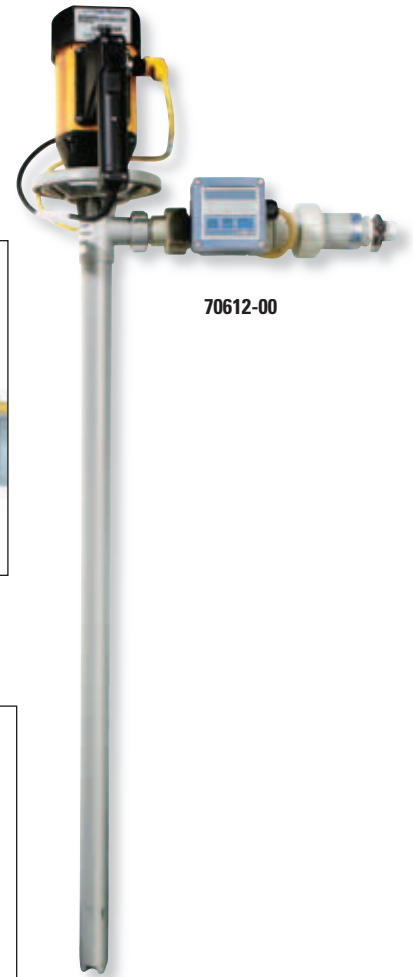
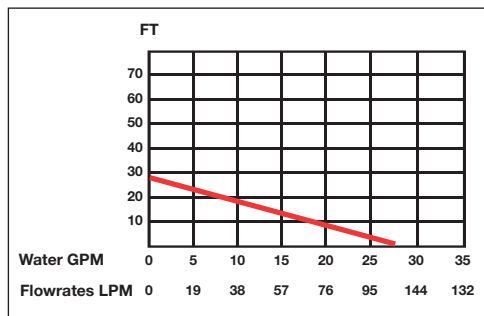
These systems are engineered to control, measure and dispense controlled volumes of fluid from drums, tanks and small storage vessels. Simply select the desired volume to transfer, press the enter key and watch the pump accurately dispense the fluid.

Systems are available with either polypropylene or PVDF pump tubes for chemical compatibility with your fluid. Flow rate can be displayed in gallons, Imperial gallons, liters, milliliters, or cubic meters per minute, second, or hour. Volume can be displayed in gallons, Imperial gallons, liters, milliliters, or cubic meters. Select from five different languages for display: English, German, French, Italian or Spanish. Flow meters also feature a re-settable totalizer, EEprom electronics, and a paddle wheel design for continuous flow measurement of neutral and aggressive solid-free fluids.

What's included: motor, pump tube, batch control meter, check valve and hose barb.



Batch control pump systems include a programmable controller; set and display dispense volumes and monitor total volume dispensed.



70612-00

Specifications

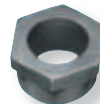
Accuracy: ±0.5% **Outlet:** 1" hose barb or 1" NPT thread

Catalog number	Max flow rate	Max viscosity	Motor type [†]	hp	rpm	Power (VAC, Hz)	Tube length	Tube material	Max temp	Price
R-70612-00 R-70612-05	25 GPM	300 cp	ODP	1	10,000	110, 60 230, 50	39"	Polypropylene	130°F (55°C)	
R-70612-10 R-70612-15	25 GPM	300 cp	ODP	1	10,000	110, 60 230, 50	47"	Polypropylene	130°F (55°C)	
R-70612-20 R-70612-25	25 GPM	300 cp	TEFC	1	10,000	110, 60 230, 50	39"	PVDF	175°F (80°C)	
R-70612-30 R-70612-35	25 GPM	300 cp	TEFC	1	10,000	110, 60 230, 50	47"	PVDF	175°F (80°C)	

[†]ODP = Open drip-proof; TEFC = Totally enclosed, fan-cooled.

Accessories

- R-70604-92 Replacement barrel adapter; PP. Provides vertical stabilization.....
- R-70604-86 Strainer; PP. Down to 5 micron.....
- R-70604-88 Strainer; SS. Down to 5 micron.....
- R-70604-90 Wall mounting bracket; provides pump storage.....
- R-70604-96 Nozzle; PP, with 6 ft of PVC hose.....



70604-92



70604-86



06601-06



70604-86



70604-96



70604-90

GO to ColeParmer.com
ColeParmer.com/ChemChart
 Don't take chances—search our interactive chemical compatibility guide!